

Newsletter Issue 3

Welcome to the third installment in the series of SES Newsletters, to be produced throughout the development of the strategies, to keep people informed of topics of interest and the progress made in each of the estuaries.

Alde and Ore Estuary

Alde and Ore Options Public Exhibits

Public Exhibits presenting the **general flood management policies** being considered for the Alde and Ore Estuary Strategy will be in place at several **public libraries** and **local yacht clubs** through the end of **May** and beginning of **June**. Exhibits can be found at **Aldeburgh, Leiston, Saxmundham** and **Woodbridge** libraries and the yacht clubs at **Aldeburgh, Slaughden** and **Orford**.

They will provide a drop-in facility to members of the local community and other interested parties and comprise posters describing the general options, with consultation leaflets and comment forms to take away. The exhibits have been organized in response to comments received during the previous consultation stages on the Alde and Ore and Blyth. Consultation leaflets and comment forms are also available from the SES website: www.suffolkestuaries.co.uk. The closing date for comments to be received is 15th June.

A public exhibition on more detailed options will be held later in the summer to discuss the short-listed and more detailed flood management options from which a preferred estuary strategy will be chosen.

Modeling the Alde and Ore

A computer model of the Alde and Ore estuary has been created using information and data gathered during surveys carried out during the second half of 2003. The resulting model has been reviewed by an independent panel of technical experts who have confirmed that it provides an accurate representation of the water flows and tidal levels present on the Alde and Ore Estuary. With the future endorsement of the model by a representation of the local consultation group the model can then be used to see how the estuary will behave in response to events like sea level

rise and the implementation of different potential flood management options.

Alde and Ore Estuary Presentations

Nigel Pask, the Agency's project manager for the Strategies will be giving a presentation on the Alde and Ore study to the Lower Alde Internal Drainage Board at the end of June and continues to be involved with the Alde and Ore Estuary Planning Partnership (EPP) which last met in April. More information about the Alde and Ore EPP can be found at www.aldeandore.net.

Blyth Estuary

Blyth Options Public Exhibitions

Despite the wintry conditions members of the local community attended a public exhibition at Southwold Pier on 24th February. The exhibition presented the general flood management options being considered for the Blyth Strategy. A public exhibition on the detailed options will follow later this summer.

Blyth Consultation Group

The second meeting of the Blyth Consultation Group took place on 10th May 2004 in the Beachcombers Room at Southwold Pier. Representatives of the local community including local councillors and harbour and estuary users attended the meeting to discuss the general flood management options being considered for the strategy. The meeting provided an overview on the progress of the modelling being undertaken and the opportunity to comment on the local objectives for the strategy.

Consultation continues to play a major role in the development of the strategy - a range of issues have been highlighted so far as being key to local concerns, including the;

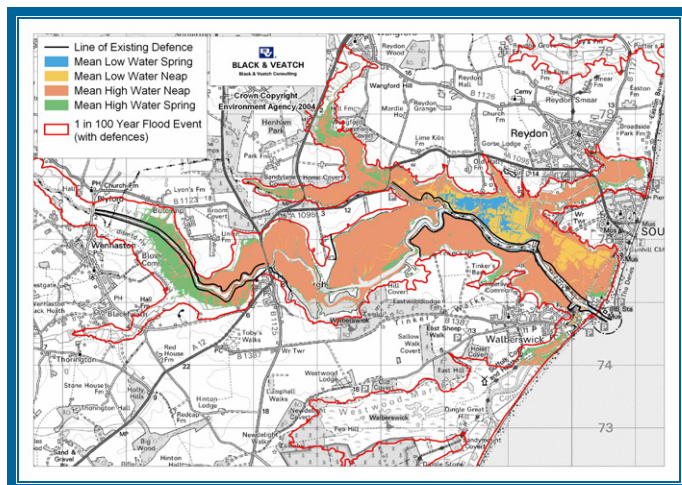
- impacts of estuary processes including siltation and erosion.
- importance of recreation in the area, especially sailing and walking.
- nature conservation and landscape value of the area.
- overall effects of flood defence options on the estuary.



Overarching Steering Group Visit to the Blyth
Delegates from the SES Overarching Steering Group, comprising representatives of various Government Agencies and Local Government met at Southwold on May 11. The meeting gave the group an opportunity to see at first hand the key points on the estuary and to discuss policy issues relating to the Blyth. Further meetings are planned for the Alde and Ore and Deben estuaries in the coming months.

Modeling the Blyth

The Blyth computer model, set up to assist in the options selection process, has now been reviewed and endorsed by a panel of technical experts and by a nominated group of local representatives from the Blyth Consultation Group. The model is now being used to predict how the different options and different future scenarios used in combination will affect the estuary.



What the Blyth might look like with no defences

The picture to the left shows an image of the Blyth Estuary showing how it might look if no defences were present. In addition the image also shows the area behind the present defences at risk from a 1 in 100 year flood event, akin to the flood surge of 1953.

Deben Estuary

Public Exhibition in February

Following on from the Deben Strategy's commencement in January, a public exhibition introducing the work currently underway was held at the Woodbridge Community Hall on the 25th February. The event was well attended and members of the SES Team were available to answer queries from interested parties.

Modeling the Deben

The next phase of work on the strategy is underway with a computer model of the estuary in the process of being set up. As with the other estuaries this will assist in the assessment of the future scenarios resulting from climate change and potential alternative flood management options.

Future Consultation for the Deben Strategy

Further consultation in the near future will be carried out through exhibits and public exhibitions as planned for the other estuaries. A local consultation group made up of representatives of the local community is also in the process of being set up. This local consultation group will help to inform the strategy on local issues, providing the local community with direct representation during the Deben Strategy's development

Contacts

Members of the public wishing to comment on the 2nd consultation stage of the Alde and Ore Strategy can pick up copies of the appropriate consultation pamphlet and comment forms from the public exhibits held in May and June. Alternatively there is the opportunity to comment via the SES website - www.suffolkestuaries.co.uk, or by contacting the Suffolk Estuarine Strategies Team who will be happy to answer any other SES queries you may have.

Nigel Pask, Project Manager
Environment Agency (Anglian region)
Kingfisher House, Goldhay Way
Orton Goldhay
Peterborough PE2 5ZR
Tel: 01733 464168
nigel.pask@environment-agency.gov.uk

Mike Steen, SES Local Liaison
Environment Agency
Cobham Road
Ipswich
Suffolk IP3 9JE
Telephone: 01473 727712
mike.steen@environment-agency.gov.uk

Matthew Clegg, Environmental Scientist
Black & Veatch Consulting Ltd.
Grosvenor House, 69 London Road
Redhill
Surrey RH1 1LQ
Tel: 01737 774155
suffolk-enquiries@bv.com